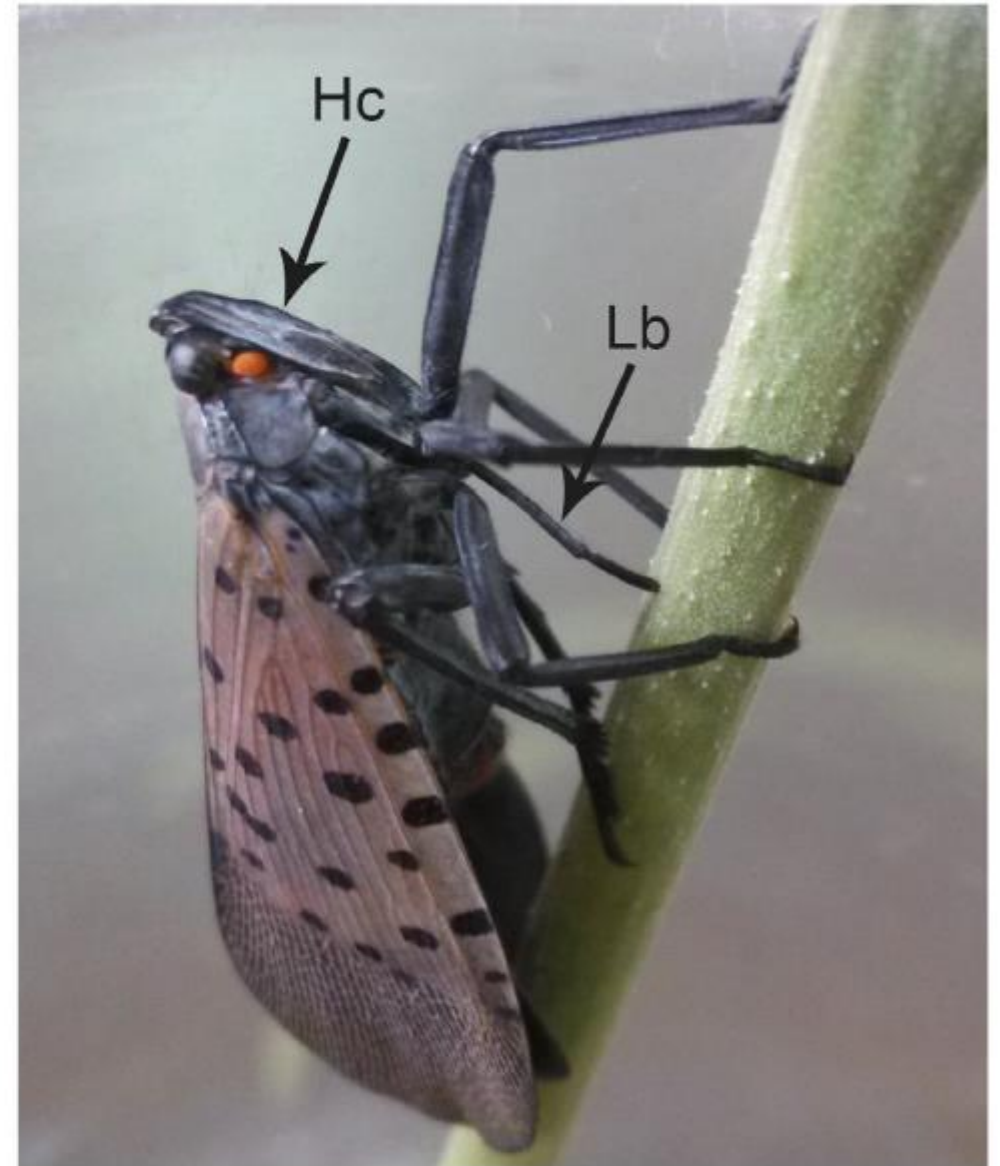


Life History

- Spotted Lanternfly, *Lycorma delicatula* (white) is related to plant hoppers. It belongs to the family Fulgoridae in the order Hemiptera (true bugs).
- Spotted Lanternfly, like most hemipterans feed on plants, using their sucking and piercing mouthparts to extract plant sap.
- They can not bite or sting.



Spotted Lanternfly Life History

- Exotic with no natural enemies present in US
- 70+ other recorded hosts
- Grapes, stone fruits, hops, pine, oak, *Prunus* species, walnut, poplar, apple and more
- Major pest of grapes and peach in S. Korea



Spotted Lanternfly in Pennsylvania



Adults: July - December



**Egg Laying:
September -
November**



Eggs: October - June



**Fourth Instar:
July - September**

One Generation Per Year



Third Instar: June - July



Second Instar: June - July



**Hatch and 1st
Instar:
May - June**

Egg Hatch May 9th in Winchester



Nymphs present May – August or late
September in PA



June 18, 2018.
Winchester, VA.
Honeydew



Mark Sutphin, VCE

Fourth Instar Nymphs – July to September in PA, move to Tree of Heaven



4th Nymphal
stage (red) June
26th, 2018.
Winchester, VA.



Mark Sutphin, VCE

4th Nymphal
stage (red) June
26th, 2018.
Winchester, VA.



Corey Riedel, VT and David Gianino, VDACS

Adults are present July thru December in PA



Adults

- Poor flyer BUT strong jumper.
- Adults can be seen as early as July.
- In the fall, adults switch hosts to feed on Tree of Heaven (*Ailanthus altissima*).
- Can easily hitch hike.



Adults

- Adults often cluster in groups.



Adult stage July
12th, 2018.
Winchester, VA.



Corey Riedel, VT and David Gianino, VDACS



September 22, Burke County
Pennsylvania





Mark Sutphin, VCE-
Winchester. September 2018

Egg laying begins in late September and continues up to the 1st killing frost.



There are 30-50 eggs per mass,
One Female can lay 3-5 egg masses



- Females will lay eggs on flat surfaces including tree bark, rocks, lawn furniture, RV's and pallets. They prefer rusty metal i.e. Railroad cars
- Freshly laid egg masses have a grey waxy mud-like coating that can change appearance over time.
- Eggs over winter, are present from September – May.





Mark Sutphin, VCE-
Winchester. September 2018



Mark Sutphin, VCE-
Winchester. September 2018



Mark Sutphin, VCE-
Winchester. September 2018



Mark Sutphin, VCE-
Winchester. September 2018



Mark Sutphin, VCE-
Winchester. September 2018



Mark Sutphin, VCE-
Winchester. September 2018



Mark Sutphin, VCE-
Winchester. September 2018



Winchester, VA

All life stages can hitchhike to new areas, but eggs and adults pose the greatest risk for movement



Spotted Lanternfly in Pennsylvania



pennsylvania
DEPARTMENT OF AGRICULTURE

Spotted Lanternfly- Why worry?

Tree-of-heaven, *Ailanthus altissima* main host

