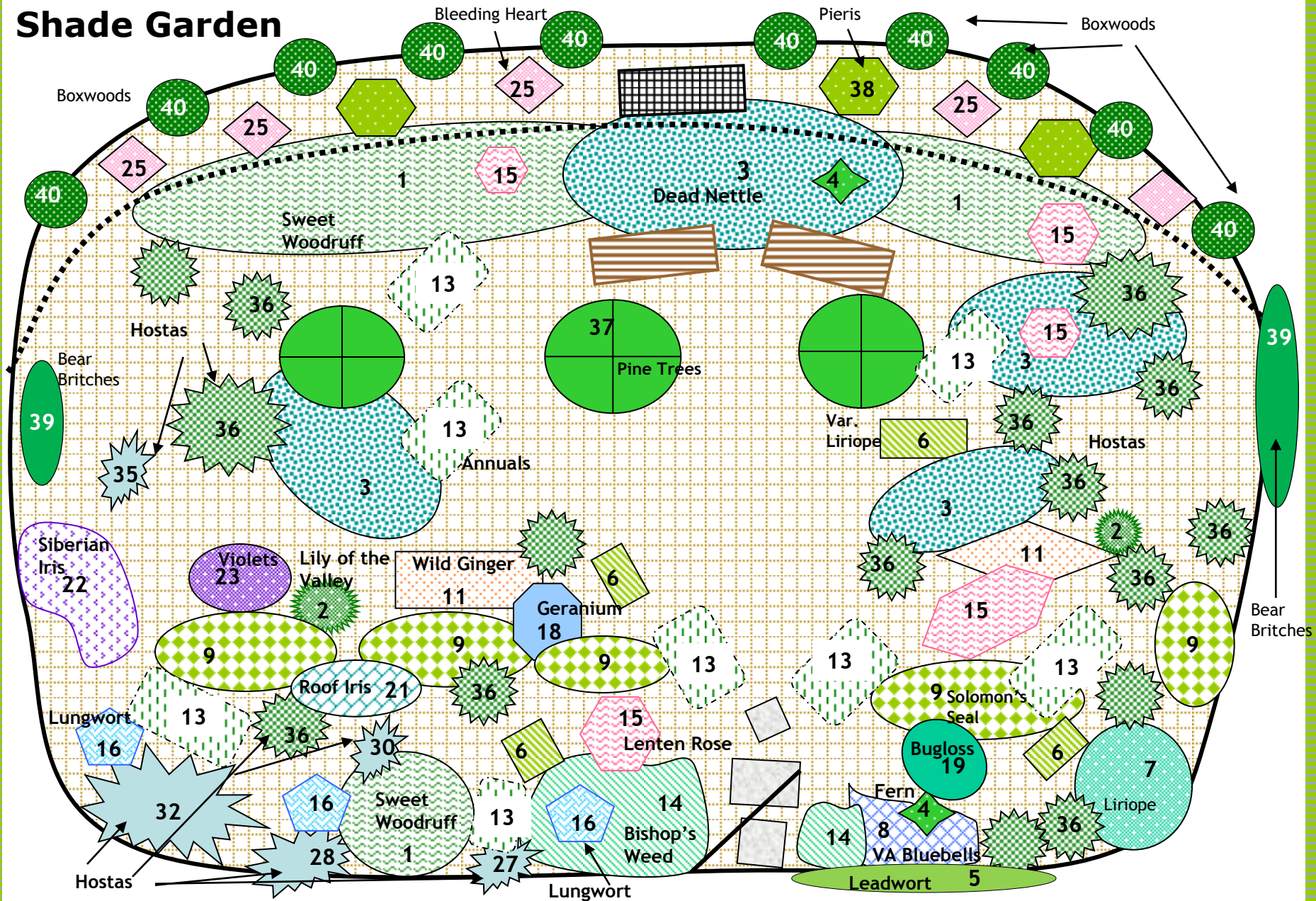


Shade Garden



Note: Garden subject to change from drawing due to weather, wildlife, etc.

Updated 7/12

For color copies of this flyer, visit the Demo Garden section of our website at: www.loudouncountymastergardeners.org and click on interactive map

Shade Garden Plant List

Plant Plant ID

- | | | | |
|----|--|----|--|
| 1 | Sweet Woodruff <i>Galium odoratum</i> | 22 | Siberian Iris <i>Iris sibirica</i> |
| 2 | Lily of the Valley <i>Convallaria majalis</i> (VA Native) | 24 | Columbine <i>Aquilegia</i> (VA Native) |
| 3 | Dead Nettle <i>Lamium maculatum</i> | 25 | Bleeding Heart <i>Dicentra spectabilis</i> |
| 4 | Fern <i>Dryopteris</i> | 26 | Cranesbill <i>Geranium maculatum</i> (VA Native) |
| 5 | Leadwort <i>Ceratostigma plumbaginoides</i> | 27 | Hosta <i>Hosta</i> 'June' |
| 6 | Variegated lilyturf <i>Liriope muscari</i> var. | 28 | Hosta <i>Hosta</i> 'Paul's Glory' |
| 7 | Lilyturf <i>Liriope muscari</i> | 30 | Hosta <i>Hosta</i> 'Sagae' |
| 8 | Virginia Bluebell <i>Mertensia virginica</i> (VA Native - ephemeral) | 32 | Hosta <i>Hosta</i> 'Krossa Regal' |
| 9 | Solomon's Seal <i>Polygonatum x hybridum</i> | 35 | Hosta <i>Hosta</i> 'Blue Angel' |
| 11 | Wild Ginger <i>Asarum canadense</i> (VA Native) | 36 | Hosta <i>Hosta</i> Plantain Lily |
| 13 | Annuals in organic soil bags | 37 | Pine Trees <i>Pinus</i> |
| 14 | Bishop's Weed <i>Aegopodium podagraria</i> | 38 | Japanese Pieris <i>Pieris japonica</i> 'Valley Rose' |
| 15 | Lenten Rose <i>Helleborus orientalis</i> | 39 | Bear Britches <i>Acanthus spinosus</i> |
| 16 | Lungwort <i>Pulmonaria saccharata</i> | 40 | English Boxwoods <i>Buxus suffruticosa</i> |
| 19 | Siberian Bugloss <i>Brunnera maerophylla</i> | 41 | Lungwort <i>Pulmonaria</i> |
| 21 | Japaneses Roof Iris <i>Iris tectorum</i> | | |